

Rossdale Water Treatment Plant

A note to our neighbours

SPRING 2026 EDITION

HAPPY SPRING!

In this newsletter, we share updates on our current and upcoming projects, recent developments at our facilities, and some neighbourly advice that will help keep your drains—and the water network—running smoothly.



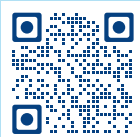
EPCOR'S LAB TEAM RECOGNIZED FOR EXCELLENCE

EPCOR's water lab team has once again demonstrated their commitment to excellence, quality and public health. The integrated lab, which includes water and wastewater testing and quality assurance, earned renewed accreditation to ISO/IEC 17025:2017.

EPCOR's water labs have maintained accreditation to this international standard for over 20 years, consistently meeting the rigorous standards for testing and calibration laboratories.

In addition to this accreditation, the microbiology lab at Rosssdale holds a federal license from the Public Health Agency of Canada. This confirms it meets national safety standards for the handling, use and safe storage of pathogens such as viruses and bacteria.

The integrated Water lab generates almost 400,000 results annually in a high-volume environment. Accuracy, reproducibility and consistency are critical — not just for compliance, but for the safety of our customers and communities.



Watch Global News' story featuring EPCOR's lab team and our water treatment processes.

OUR NEIGHBOURLY ADVICE ON WHAT NOT TO FLUSH

We're continuing to share EPCOR's neighbourly advice to help the public understand the proper disposal of fats, oils, and grease. We recently kicked off our latest campaign to educate the public about what not to flush. Our newest topic is already on radios and screens across Edmonton, with more content rolling out on social media and other channels in the weeks ahead.

Why? Flushing the wrong things can block pipes in your home and the city's sewer system. To keep your home plumbing working properly, it's important to flush only toilet paper. Even wipes labeled as "flushable" don't break down like toilet paper.



These "flushable wipes" stay intact and contribute to blockages in your plumbing, so it's best to toss them in the trash. Other common household items that should always go in the garbage include cotton swabs, tissues, feminine hygiene products, dental floss and paper towels.

WHAT NOT TO FLUSH



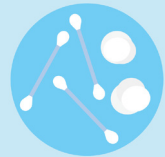
Tissues



Feminine Hygiene
Products



Disinfecting/Personal
Hygiene/ Baby Wipes



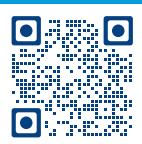
Cotton Swabs/
Cotton Balls



Dental Floss



Paper Towels



Learn more about proper disposal tips for common household items at epcor.com/ThinkBeforeYouFlush.



Here is artist Brandon Atkinson installing one of his pieces on the south Rossdale trail closure fencing. Each end of the trail has different artwork—next time you're out for a walk, check them both out!

INDIGENOUS ART COMES TO ROSSDALE

By now, the Edmonton Water Treatment Plants Flood Project construction is very visible to everyone who comes to our plant sites. If you come to Rossdale today, or approach either side of the closed trail south of the plant, you might notice something special...

As part of the project, Indigenous and local communities identified an opportunity to include art and interpretive elements in two locations around Rossdale. The main goal of the art is to reflect the diverse histories, perspectives and uses of the Rossdale area, while appealing to and creating connections for as broad an audience as possible. To achieve this, we brought together a panel of both Indigenous and local community members. Their mandate was to review and recommend artists and interpreters. The group reached consensus on the artists who will be asked to develop art and interpretive elements for the flood barriers.

The selected artists include:

Tiffany Shaw—a Métis artist, curator and architect, and founding core member of the Ociciwan Contemporary Art Society.

Crystal Lee Clark—a Nêhiyaw/Dene Otipemisiwak iskwew artist and educator with 22+ years' experience.

Stewart Steinhauer—Saddle Lake Cree Nation Member and celebrated granite carver.

Brandon Atkinson—Rooted in Edmonton and the rich tapestry of the Nehiyawak as the Four-direction people, he has created the remarkable art you can now see at either end of the closed trail south of Rossdale.

We're proud to be working with these talented artists to realize a unique vision that honours Rossdale's rich history and welcomes everyone to connect with its story. Stay tuned for updates as development of the art continues in 2026.

CURRENT/UPCOMING PROJECTS AT ROSSDALE

Waste stream upgrades

There are a number of plant waste streams from the water treatment process that discharge to the North Saskatchewan River through underground pipes. EPCOR has an Approval to Operate from Alberta Environment which allows for these discharges, provided they are monitored and that they meet specific quality requirements.

Some of the pipes that carry the waste water are in need of rehabilitation as their condition has deteriorated over time. This project will refurbish pipes and rebuild one outfall, to ensure that they will continue to function for years to come.

Currently, the multi-use trail is closed along the south boundary of the Rossdale plant for construction of the flood wall (scheduled to re-open in the first quarter of 2027). We are completing the waste stream upgrades along the same timeframe to minimize the trail closure and impact to the public.

Rossdale flood barrier construction

As we enter the final year of construction on the Rossdale Water Treatment Plant flood barriers, we're happy to report work is proceeding on schedule. We previously shared that we expected the construction to be complete in the first quarter of 2027, and that timeline still holds. The trail south of the plant will reopen at that time. In the meantime, the east laydown area will continue to be used, and we appreciate the community's support for us to use this space for equipment and materials. This space will be re-opened in 2027.

One upcoming activity for the project is seeding the reservoir area on the north-east side of our plant site this spring/summer. During this time, you may notice some dust while we spread the topsoil. Beyond that, you can continue to expect typical construction sites, sounds and activities. We will work to mitigate our impacts to possible to reduce the impact to our neighbours and follow the Community Standards Bylaw.



Archaeological work during the flood project uncovered artifacts spanning thousands of years to the fur trade era. This included bison bone, animal remains, artifact scatters, a copper arrowhead, and a wooden walkway (pictured), highlighting the site's enduring cultural significance as a long-standing Indigenous gathering place and trade route, and later as the location of one of the historic Fort Edmonton posts.



STORMWATER OUTFALL REHABILITATION

EPCOR has been working on rehabilitating an outfall structure located east of 100 Street and 97 Avenue as it has deteriorated over the years. Outfalls play an essential role in Edmonton's drainage system by conveying stormwater from various neighborhoods to the North Saskatchewan River.

EPCOR began construction at this outfall location in October 2025, with an anticipated completion date of April 2026. However, the project experienced several delays due to material availability and adverse weather conditions. As a result, the completion timeline has been extended to early June 2026.



CONTACT US

Have any questions about our work, or want to sign up for our email list to get updates on our projects?

Contact us at:

Email: epcorprojects@epcor.com

Phone: 780-412-4200